



Accommodation Options

Skukuza Rest Camp | Kruger National Park
5th ICPOW & 53rd PARSА 2025



Unit	Description	Available from	Available until	Available Units	Base Rate (no. people)	Max (no. people)	Base Rate per night
CTT2 (SAFARI TENT)	1 bedroom with 2 single beds, Communal ablutions, Communal Kitchen, Fan, Fridge, No smoking, No utensils	14 Sept.	18 Sept.	2	2	2	R856.00
CTT4 (SAFARI TENT)	1 bedroom with 4 single beds, Communal ablutions, Communal Kitchen, Fan, Fridge, No smoking, No utensils	14 Sept.	18 Sept.	5	2	4	R856.00
BE3 (BUNGALOW)	1 bedroom with 3 single beds, Air-conditioned, Communal Kitchen, Fridge, No smoking, Sink, Utensils, WC and shower	14 Sept.	18 Sept.	18	2	3	R1,725.00
LBD2 (BUNGALOW)	1 bedroom with 2 single beds, Air-conditioned, Communal Kitchen, DSTV (limited channels), Fridge, No smoking, No view, Sink, Utensils, WC and shower	14 Sept.	18 Sept.	5	2	2	R2,110.00
LB3 (BUNGALOW)	1 bedroom with 3 single beds, Air-conditioned, Closed veranda, Fridge, Hotplate, Luggage rack, Microwave, No smoking, Outside table, Sink, Utensils, WC and shower	14 Sept.	18 Sept.	3	2	3	R2,240.00
LR2W (RIVERSIDE BUNGALOW)	1 bedroom with 2 single beds, Air-conditioned, DSTV (limited channels), Fridge, Kitchen, No smoking, River view, Sited to the west of the restaurant, WC and shower	14 Sept.	18 Sept.	3	2	2	R2,640.00
LR2ZW (RIVERSIDE BUNGALOW)	1 bedroom with 2 single beds, Air-conditioned, DSTV (limited channels), Fridge, Kitchen, No smoking, River view, Sited to the west of the restaurant, Unit accessible to the mobility challenged, WC and shower	14 Sept.	18 Sept.	2	2	2	R2,640.00
GC6 (GUEST COTTAGE)	2 bedrooms, each with 3 single beds, no smoking, WC and bath, WC and shower	14 Sept.	18 Sept.	1	4	6	R3,375.00
GC6D (GUEST COTTAGE)	2 bedrooms, each with 3 single beds, Air-conditioned, Kitchen, No smoking, WC and bath, WC and shower	14 Sept.	18 Sept.	3	4	6	R3,375.00
GMS (MONI GUEST HOUSE)	1 bathroom with bath, shower and WC, 1 separate shower, 3 bathrooms, each with w/c, basin and bath, 4 bedrooms, each with 2 single beds, Air-conditioned, Kitchen, No smoking	14 Sept.	18 Sept.	1	8	8	R8,761.00
GJM (JAMIE MULHOVO GUEST HOUSE)	6 bedrooms, each with 2 single beds, 5 ensuite bathrooms with shower, 1 ensuite bathroom with bath and shower. Air-conditioned. Kitchen one: oven, stove, microwave, utensils. Kitchen two: four plate gas stove, microwave, utensils. No smoking, One of the bathrooms is accessible by the disabled.	14 Sept.	18 Sept.	1	12	12	R12,315.00



BOOK ONLINE

!! The Base Rate amount is charged for any number of guests occupying a unit not exceeding the base number for that accommodation type. Any additional Adults and Children exceeding the base capacity are charged in addition to the base rate amount per persons up to the number of beds or guests allowed in the unit.

PLEASE TAKE NOTE:

SANPARKS IS NOW CHARGING A DAILY CONSERVATION FEE

Conservation fees are applicable from day of arrival to day of departure.

E.g. if you arrive on the 14th and depart on the 18th,
fees are applicable for 4 days (14, 15, 16 and 17th).

Members of SANParks' loyalty programme WILD do not pay conservation fees if proof of Identity and their WILD card are shown on arrival.

<u>Category</u>	<u>Adult Rate/Day</u>	<u>Child Rate/Day</u>
South African Citizens and Residents (with ID)	R128.00/day	R61.00/day
SADC Nationals (with passport)	R257.00/day	R128.00/day
Standard Conservation Fee (internationals)	R535.00/day	R267/day

**ALL ACCOMMODATION MUST BE BOOKED ONLINE & PAID
(OR PURCHASE ORDER RECEIVED),**

BY NO LATER THAN 16 JULY 2025.

**After this date, the block-booking will be released, and we will not be able to assist with
accommodation bookings.**



Safari Tent (CTT2)



- Features & Useful Information**
- 1 bedroom with 2 single beds
 - Communal ablutions
 - Communal Kitchen
 - Fan
 - Fridge
 - No smoking
 - No utensils

Base Rate	R856.00
Additional Adult	n/a
Additional Child	n/a
Base Rate (no. people)	2
Max (no. beds/people)	2



Safari Tent (CTT4)



Features & Useful Information

- 1 bedroom with 4 single beds
- Communal ablutions
- Communal Kitchen
- Fan
- Fridge
- No smoking
- No utensils

Base Rate	R856.00
Additional Adult	R225.00
Additional Child	R115.00
Base Rate (no. people)	2
Max (no. beds/people)	4





Bungalow (BE3)

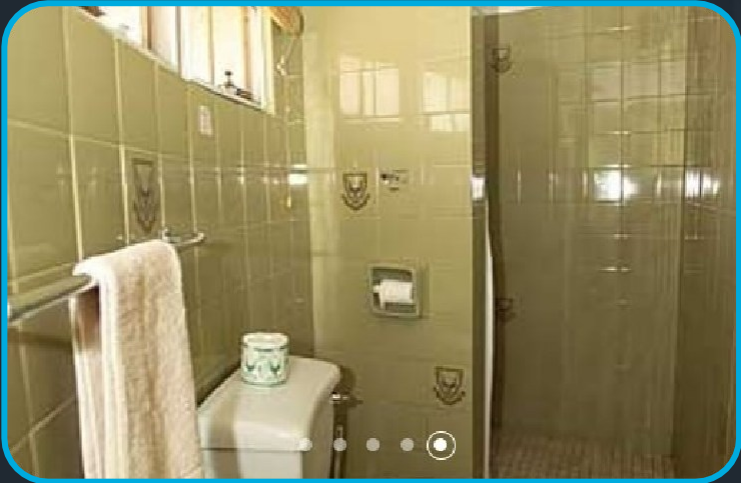
Features & Useful Information

- 1 bedroom with 3 single beds
- Air-conditioned
- Communal Kitchen
- Communal Kitchen
- Fridge
- No smoking
- Sink
- Utensils
- WC and shower

Base Rate	R1,725.00
Additional Adult	R340.00
Additional Child	R170.00
Base Rate (no. people)	2
Max (no. beds/people)	3



Bungalow (LBD2)



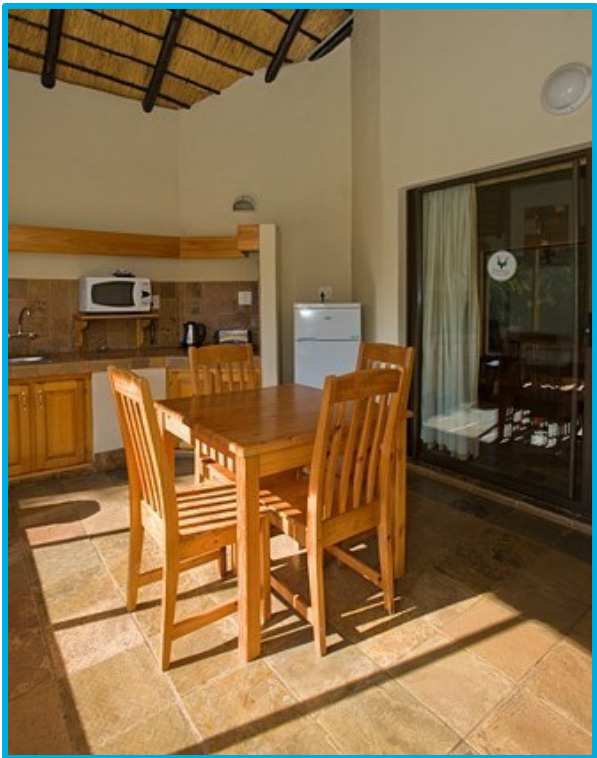
Features & Useful Information

- 1 bedroom with 2 single beds
- Air-conditioned
- Communal Kitchen
- DSTV (limited channels)
- Fridge
- No smoking
- No view
- Sink
- Utensils
- WC and shower

Base Rate	R2,110.00
Additional Adult	n/a
Additional Child	n/a
Base Rate (no. people)	2
Max (no. beds/people)	2



Bungalow (LB3)



Features & Useful Information

- 1 bedroom with 3 single beds
- Air-conditioned
- Closed veranda
- Fridge
- Hotplate
- Luggage rack
- Microwave
- No smoking
- Outside table
- Sink
- Utensils
- WC and shower



Base Rate	R2,240.00
Additional Adult	R610.00
Additional Child	R305.00
Base Rate (no. people)	2
Max (no. beds/people)	3



LR2W (RIVERSIDE BUNGALOW)



Features & Useful Information

- 1 bedroom with 2 single beds
- Air-conditioned
- DSTV (limited channels)
- Fridge
- Kitchen
- No smoking
- River view
- Sited to the west of the restaurant
- WC and shower

Base Rate	R2,640.00
Additional Adult	n/a
Additional Child	n/a
Base Rate (no. people)	2
Max (no. beds/people)	2



LR2ZW (RIVERSIDE BUNGALOW)



Features & Useful Information

- 1 bedroom with 2 single beds
- Air-conditioned
- DSTV (limited channels)
- Fridge
- Kitchen
- No smoking
- River view
- Sited to the west of the restaurant
- Unit accessible to the mobility challenged
- WC and shower

Base Rate	R2,640.00
Additional Adult	n/a
Additional Child	n/a
Base Rate (no. people)	2
Max (no. beds/people)	2



Guest Cottage (GC6)



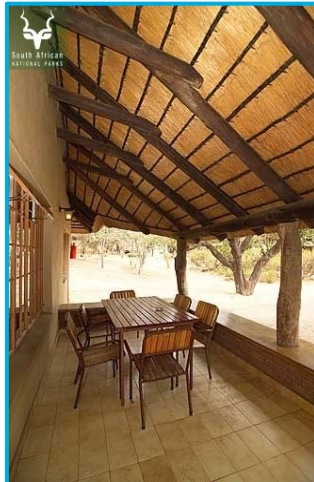
Features & Useful Information

- 2 bedrooms, each with 3 single beds
- Air-conditioned
- Kitchen
- No smoking
- WC and bath
- WC and shower

Base Rate	R3,375.00
Additional Adult	R610.00
Additional Child	R305.00
Base Rate (no. people)	4
Max (no. beds/people)	6



Guest Cottage (GC6D)



Features & Useful Information

- 2 bedrooms, each with 3 single beds
- Air-conditioned
- Kitchen
- No smoking
- WC and bath
- WC and shower

Base Rate	R3,375.00
Additional Adult	R610.00
Additional Child	R305.00
Base Rate (no. people)	4
Max (no. beds/people)	6



Moni Guest House (GMS)



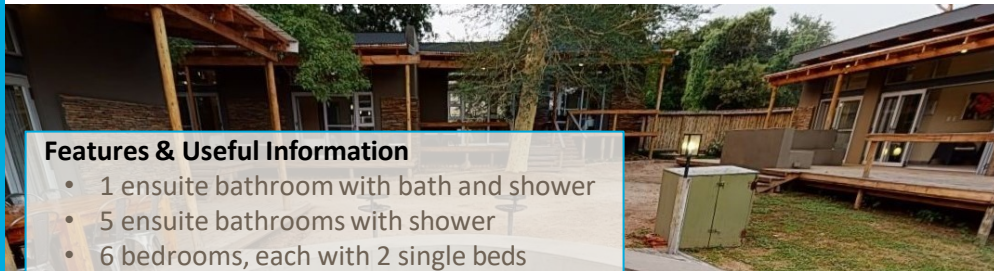
Features & Useful Information

- 1 bathroom with bath, shower and wc
- 1 separate shower
- 3 bathrooms, each with w/c, basin and bath
- 4 bedrooms, each with 2 single beds
- Air-conditioned
- Kitchen
- No smoking

Base Rate	R8,761.00
Additional Adult	n/a
Additional Child	n/a
Base Rate (no. people)	8
Max (no. beds/people)	8



Jamie Mulhovo Guest House (GJM)



Features & Useful Information

- 1 ensuite bathroom with bath and shower
- 5 ensuite bathrooms with shower
- 6 bedrooms, each with 2 single beds
- Air-conditioned
- Kitchen 1: oven, stove, microwave, utensils
- Kitchen 2: 4 plate gas stove, microwave, utensils
- No smoking
- One of the bathrooms is accessible by the disabled
- Two kitchens

Base Rate	R12,315.00
Additional Adult	n/a
Additional Child	n/a
Base Rate (no. people)	12
Max (no. beds/people)	12



Safari Lodge Hotel

- 60 Rooms available
- R3,570.00 (single, b&b)
- R2,380.00 (pp sharing, b&b)
- Breakfast only – R220.00 (tbc)



